

# 1st IBS International Symposium on Synapses : From Molecules to Diseases

Speaker

1. **Tatsuo Suzuki (BSIND)**

Molecular and structural bases for synaptic plasticity

2. **Daniela C. Dieterich (Germany)**

Deciphering neuronal and astroglial proteome dynamics with a click

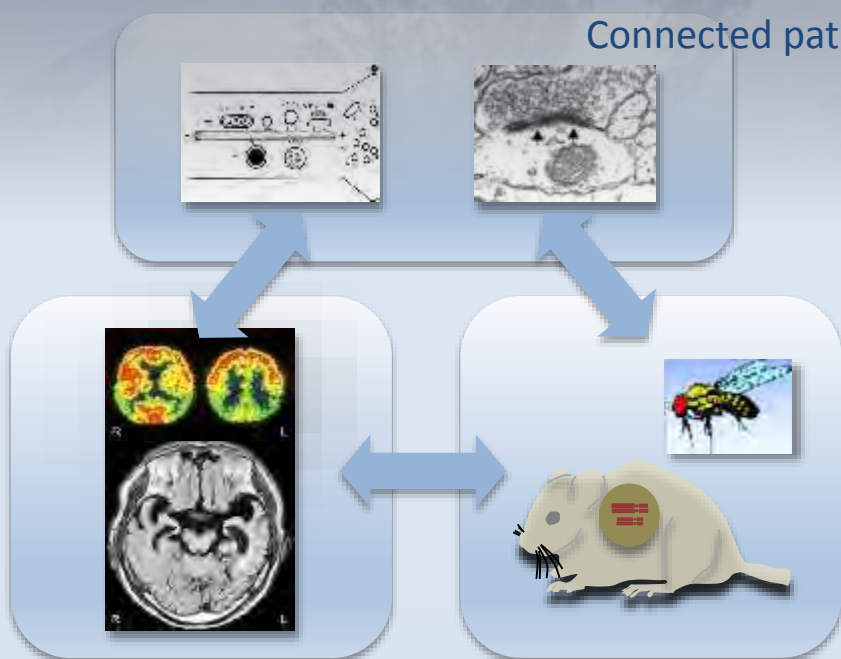
3. **Katsuhiko Tabuchi (BSIND)**

Immaturation of synapse: as a new molecular pathophysiology of autism

4. **Weidong Li (China)**

Animal modeling approaches to neuropsychiatric disorders:

Connected pathways emerging from DISC1, BCL9 and PHF8 mouse models



**Fri 6 Mar 2015**

**13:00-16:30**

Asahi Life Science Research Building  
9th floor AB, Shinshu University

Reservation  
Unnecessary

Admission  
Free



**IBS ICCER**  
Institute for Biomedical Sciences  
Interdisciplinary Cluster for Cutting Edge Research  
Shinshu University

Contact us

Tomoka Ozawa  
Institute for Biomedical Sciences  
Interdisciplinary Cluster for Cutting Edge Research  
Shinshu University  
3-1-1 Asahi, Matsumoto, Nagano, 390-8621, Japan  
0263-37-3548 (E-Mail: [biomedical@shinshu-u.ac.jp](mailto:biomedical@shinshu-u.ac.jp))



第1回バイオメディカル研究所  
**国際シンポジウム**  
シナプス：分子から病態へ

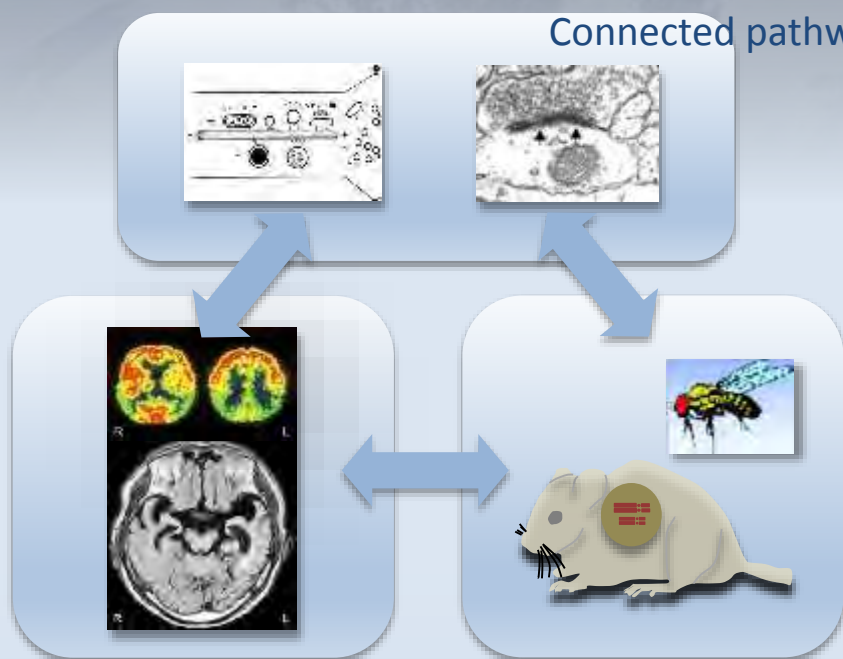
**講演**

1. **鈴木 龍雄** (神経難病学)  
Molecular and structural bases for synaptic plasticity

2. **Daniela C. Dieterich** (ドイツ)  
Deciphering neuronal and astroglial proteome dynamics with a click

3. **田淵 克彦** (神経難病学)  
Immaturity of synapse: as a new molecular pathophysiology of autism

4. **Weidong Li (李衛東)** (中国)  
Animal modeling approaches to neuropsychiatric disorders:  
Connected pathways emerging from DISC1, BCL9 and PHF8 mouse models



**2015年3月6日(金)**

**13:00 – 16:30**

信州大学 旭総合研究棟9階  
講義室AB

予約不要

参加無料